



THE MANUFACTURER OF COMMERCIAL  
COOLING AND FREEZING EQUIPMENT



# EQUIPMENT CATALOG



DISPLAY FREEZERS



DISPLAY COUNTERS



CABINETS



SHOP EQUIPMENT

### DISPLAY FREEZERS

Display freezers with curved glass . . . . .	3
Display freezers with flat glass . . . . .	8
Display freezers with solid lids . . . . .	9
Display freezers for soft ice cream . . . . .	10
Bonnet type freezers with curved glass / solid lids . . . . .	13
Universal bonnet with curved glass. . . . .	14
Bonnet type freezers with curved glass / solid lids. . . . .	16
Island line. . . . .	17

### DISPLAY COUNTERS

Display counters with curved glass . . . . .	18
Display counters with flat glass . . . . .	20
Pastry counters with curved / flat glass. . . . .	24

### CABINETS

Cooling and freezing cabinets with glass doors . . . . .	26
Cooling and freezing cabinets with solid doors. . . . .	28

### SALES COUNTERS

Sales counters . . . . .	30
Modular shelving . . . . .	31

## SHORTCUTS: ADDITIONAL OPTIONS



Additional baskets



Branding



Electronic controller



Lightbox



Protective bumpers



Price tag holder



LED lighting



Holder for hanging products



Body cabinet painting



Modular shelving



Additional grid shelf



Spoonwasher



Upright cabinet stand



Stainless steel lid



Auto-defrost



Decorative back wall



## DISPLAY FREEZERS WITH CURVED GLASS



Branding



Electronic controller



Lightbox



Body cabinet painting



LED lighting

FRAME COLOUR:



COULD BE MANUFACTURED  
FOR OPERATING IN  $-5..+5^{\circ}\text{C}$   
TEMPERATURE RANGES

### V SERIES

M100V

M200V

Width × Depth × Height (mm)	596×661×929				806×661×929			
Gross volume (dm <sup>3</sup> )	158				240			
Net volume (dm <sup>3</sup> )	107				170			
Ambient temperature range (°C)					$+16 \div +35$			
Operating temperature range (°C)					$-14 \div -23$			
Climate class					7			
Temperature range					electromechanical			
Refrigerant type	R452a	R404a	R290	R290*	R452a	R404a	R290	R290*
Current consumption (A)	1,2		1,0	0,6	1,2		1,1	0,6
Electric power consumption (kW/24h)	1,8		1,1	1,05	1,95		1,6	1,3
Baskets (pcs)	2				3			
Lock								
Castors (pcs)	4				4			
Weight (kg)	44				50			

\* – energy efficient model

# DISPLAY FREEZERS WITH CURVED GLASS



Branding



Electronic controller



Lightbox



Body cabinet painting



Modular shelving



LED lighting

FRAME COLOUR:



COULD BE MANUFACTURED  
FOR OPERATING IN -5...+5°C  
TEMPERATURE RANGES

## S SERIES

	M200S			M300S			M400S			M500S			M600S			
Width × Depth × Height (mm)	806×661×940			1016×661×940			1216×661×940			1436×661×940			1656×661×940			
Gross volume (dm <sup>3</sup> )	247			333			416			506			597			
Net volume (dm <sup>3</sup> )	185			252			316			387			458			
Ambient temperature range (°C)													+16 ÷ +35			
Operating temperature range (°C)													-14 ÷ -23			
Temperature range													electromechanical			
Refrigerant type	R452a	R404a	R290	R290*	R452a	R404a	R290	R290*	R452a	R404a	R290	R290*	R452a	R404a	R290	R290*
Current consumption (A)	1,2	1,1	0,6	1,5	1,3	0,6	1,6	1,5	0,8	2,0	1,6	0,9	2,0	1,7	1,0	
Electric power consumption (kW/24h)	1,9	1,7	1,2	2,5	2,1	1,54	3,1	2,6	1,95	4,0	3,3	2,65	4,3	3,6	2,9	
Baskets (pcs)	3			4			5			6			7			
Lock													+			
Castors (pcs)	4			4			4			4			5			
Weight (kg)	51			54			60			72			82			

\* – energy efficient model.

CHARACTERISTICS



# DISPLAY FREEZERS WITH CURVED GLASS



Branding



Electronic controller



Lightbox



Body cabinet painting



LED lighting

FRAME COLOUR:



## SH SERIES

### M300SH

### M400SH

Width × Depth × Height (mm)	1016×721×928			1216×721×928		
Gross volume (dm <sup>3</sup> )	340			427		
Net volume (dm <sup>3</sup> )	254			321		
Ambient temperature range (°C)	+16 ÷ +35					
Operating temperature range (°C)	-14 ÷ -23					
Temperature range	electromechanical					
Refrigerant type	R452a	R404a	R290	R452a	R404a	R290
Current consumption (A)	1,5		1,3	1,6		1,5
Electric power consumption (kW/24h)	2,3		2,0	2,9		2,4
Baskets (pcs)		4			5	
Lock						+
Castors (pcs)		4			4	
Weight (kg)		58			64	

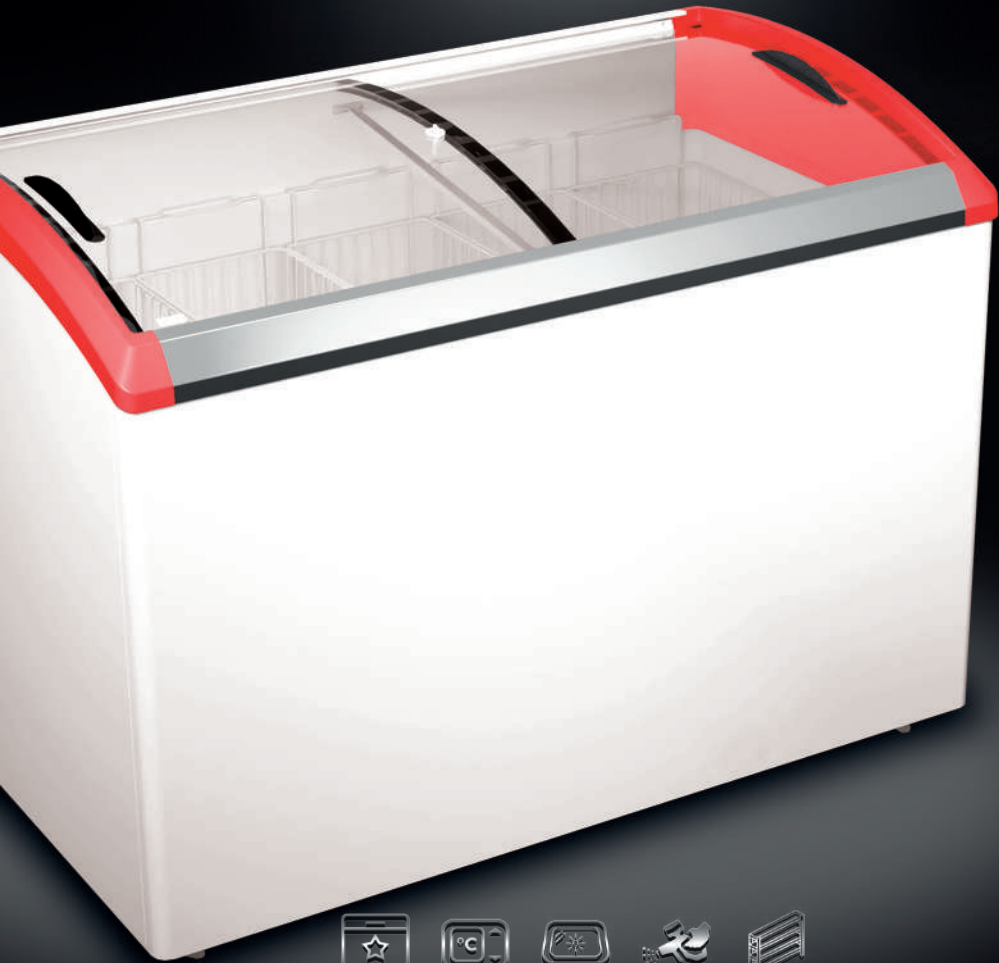
CHARACTERISTICS



# DISPLAY FREEZERS WITH CURVED GLASS



FRAME COLOUR:



Branding



Electronic controller



Lightbox

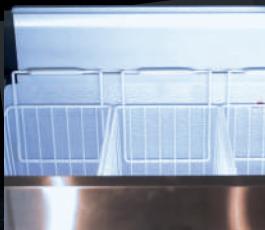


Body cabinet painting



Modular shelving





## ADVANTAGES

- Hermetically sealed colour frame with aluminum profiles is developed by REHAU engineers and made by means of two methods combining - extrusion and casting of high-quality European materials. It ensures the vacuum tightness of the freezer and guarantees resistance to mechanical damage and long-term performance.
- There are no additional guiding elements in the design of the frame and this ensures easy movement and replacement of the sliding lids. The frame has an enlarged rear wall, which reduces the effect of "dew point" on glass unit. The freezer can be optionally equipped with additional heating of the front wall and moisture drainage system.
- Energy-saving LED strips are built inside of the freezer, that reduces the risk of damage and doesn't prevent the loading or unloading of products.
- Standard set includes bimetal thermometer. Additionally, there is a possibility to install an electronic controller with a touch-screen LED display, which allows you to adjust the temperature inside of the freezer for stable performance.

## SF SERIES

**M200SF**
**M300SF**
**M400SF**
**M500SF**
**M600SF**
**M700SF**

Width × Depth × Height (mm)	808×667×916			1018×667×916			1218×667×916			1438×667×916			1658×667×916			1908×667×916					
Gross volume (dm <sup>3</sup> )	238			322			402			490			578			678					
Net volume (dm <sup>3</sup> )	174			238			299			366			433			509					
Ambient temperature range (°C)																+16 ÷ +35					
Operating temperature range (°C)																-14 ÷ -23					
Climate class																7					
Temperature range																electromechanical					
Refrigerant type	R462a	R404a	R290	R290*	R462a	R404a	R290	R290*	R462a	R404a	R290	R290*	R462a	R404a	R290	R290*	R462a	R404a	R290	R290*	
Current consumption (A)	1,2	1,1	0,6		1,5	1,3	0,6		1,6	1,5	0,8		2,0	1,6	0,9		2,0	1,7	1,0		3,9
Electric power consumption (kW/24h)	1,9	1,7	1,2		2,5	2,1	1,54		3,1	2,6	1,95		4,0	3,3	2,65		4,3	3,8	2,9		4,6
Baskets (pcs)	3			4			5			6			7			8					
Lock																+					
Castors (pcs)	4			4			4			4			5			5					
Weight (kg)	51			54			61			72			82			93					

\* - energy efficient model

CHARACTERISTICS

## DISPLAY FREEZERS WITH FLAT GLASS



Branding



Electronic controller



LED lighting



Lightbox



Body cabinet painting



Modular shelving



FRAME COLOUR:



COULD BE MANUFACTURED  
FOR OPERATING IN -5...+5°C  
TEMPERATURE RANGES

### P SERIES

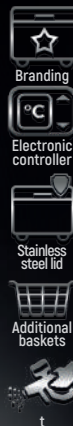
	M200P				M300P				M400P				M500P				M600P			
Width × Depth × Height (mm)	806×661×924				1016×661×924				1216×661×924				1436×661×924				1656×661×924			
Gross volume (dm <sup>3</sup> )	253				342				426				518				611			
Net volume (dm <sup>3</sup> )	210				286				358				437				515			
Ambient temperature range (°C)																	+16 ÷ +35			
Operating temperature range (°C)																	-14 ÷ -23			
Climate class																	7			
Temperature range																	electromechanical			
Refrigerant type	R 452a	R 404a	R 290	R 290*	R 452a	R 404a	R 290	R 290*	R 452a	R 404a	R 290	R 290*	R 452a	R 404a	R 290	R 290*	R 452a	R 404a	R 290	R 290*
Current consumption (A)	1,2	1,1	0,6		1,5	1,3	0,6		1,6	1,5	0,8		1,8	1,6	0,9		2,0	1,7	1,0	
Electric power consumption (kW/24h)	1,9	1,7	1,1		2,5	2,1	1,45		3,1	2,6	1,85		4,0	3,3	2,55		4,3	3,8	2,8	
Baskets (pcs)	3				4				5				6				7			
Lock																	*			
Castors (pcs)	4				4				4				4				5			
Weight (kg)	52				63				73				81				89			

\* – energy efficient model.





## DISPLAY FREEZERS WITH SOLID LIDS



COULD BE MANUFACTURED  
FOR OPERATING IN -5..+5°C  
TEMPERATURE RANGES

### Z SERIES

	M200Z				M300Z				M400Z				M500Z				M600Z			
Width × Depth × Height (mm)	806×740×910				1016×740×910				1216×740×910				1436×740×910				1656×740×910			
Gross volume (dm <sup>3</sup> )	241				326				406				495				584			
Net volume (dm <sup>3</sup> )	210				286				358				437				515			
Ambient temperature range (°C)																	+16 ÷ +35			
Operating temperature range (°C)																	-14 ÷ -23			
Climate class																	7			
Temperature range																	electromechanical			
Refrigerant type	R452a	R404a	R290	R290*	R452a	R404a	R290	R290*	R452a	R404a	R290	R290*	R452a	R404a	R290	R290*	R452a	R404a	R290	R290*
Current consumption (A)	1,1	1,0	0,5	1,3	1,2	0,6	1,5	1,3	0,7	1,7	1,5	0,9	1,8	1,7	0,9	2,0	1,8	1,7	0,95	
Electric power consumption (kW/24h)	1,5	1,25	1,0	1,8	1,5	1,0	2,0	1,7	1,55	2,4	2,1	2,0	2,8	2,4	2,2					
Baskets (pcs)	1				1				1				1				1			
Lock																	+			
Legs/Castors (pcs)	4				4				4				4				5			
Weight (kg)	52				58				65				73				81			

CHARACTERISTICS

\* – energy efficient model.



# DISPLAY FREEZERS FOR SOFT ICE CREAM



FRAME COLOUR:



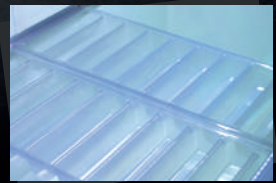
Branding



Spoonwasher



Body cabinet  
painting



Plastic holders for popsicles



## Q SERIES

**M100Q**

**M300Q**

**M400Q**

**M600Q**

**M12Q**

**M18Q**

Width × Depth × Height (mm)	661×596×1194			1016×721×1198			1216×721×1198			1656×721×1198			1162×906×1248			1666×906×1248		
Gross volume (dm <sup>3</sup> )	178			361			444			627			610			844		
Net volume (dm <sup>3</sup> )	92			178			220			310			285			403		
Ambient temperature range (°C)																+16 ÷ +35		
Operating temperature range (°C)																-14 ÷ -23		
Climate class																7		
Temperature range																electronic controller		
Refrigerant type	R452a	R404a	R290	R290*	R452a	R404a	R290	R290*	R452a	R404a	R290	R290*	R290	R290*	R290	R452a	R404a	R290
Current consumption (A)	1,2	1,0	0,6	1,8	1,3	0,7	1,8	1,5	0,8	1,8	1,1	1,9	2,8	2,9				
Electric power consumption (kW/24h)	2,0	1,65	1,35	2,75	2,1	1,78	3,75	2,85	1,9	3,9	3,0	4,1	7,6	7,0				
Ice cream flavours (pcs)	3			7			9			12			12			18		
Lock																		
Castors (pcs)	4			4			4			5			4			5		
Weight (kg)	54			75			86			114			104			135		

\* – energy efficient model

## FEATURES

- The interior of the freezer is made of Varcolour® metal to comply with hygienic norms and standards.
- The scooping freezers of Q-series are equipped with ISO COMFORT energy-saving double glazed units, which protect against fogging and offer an effective product presentation.
- We keep implementing the GREEN LINE requirements by using eco-friendly refrigerant R290 with energy-saving compressor and fan motor.
- Performance of the equipment in a static cooling mode gives to the user an opportunity not only to sell and exhibit the goods, but also to store them overnight.

CHARACTERISTICS

# DISPLAY FREEZERS FOR SOFT ICE CREAM



Branding



Electronic controller



Spoonwasher



Body cabinet painting



LED lighting



FRAME COLOUR:

## SL SERIES

**M200SL**

**M300SL**

**M400SL**

**M600SL**

	M200SL				M300SL				M400SL				M600SL			
Width × Depth × Height (mm)	806×661×1319				1016×661×1319				1216×661×1319				1656×661×1319			
Gross volume (dm <sup>3</sup> )	247				333				416				597			
Net volume (dm <sup>3</sup> )	185				252				316				458			
Ambient temperature range (°C)													+16 ÷ +35			
Operating temperature range (°C)													-14 ÷ -23			
Climate class													7			
Temperature range													electromechanical			
Refrigerant type	R 452a	R 404a	R 290	R 290*	R 452a	R 404a	R 290	R 290*	R 452a	R 404a	R 290	R 290*	R 452a	R 404a	R 290	R 290*
Current consumption (A)	1,2	1,1	0,6	1,5	1,3	0,6	1,6	1,5	0,8	2,0	1,7	1,0	2,0	1,7	1,0	1,0
Electric power consumption (kW/24h)	1,9	1,7	1,2	2,5	2,1	1,54	3,1	2,6	1,95	4,3	3,8	2,9	4,3	3,8	2,9	2,9
Ice cream flavours (pcs)	4				7				9				12			
Lock													+			
Castors (pcs)	4				4				4				5			
Weight (kg)	65				70				78				104			

\* - energy efficient model

CHARACTERISTICS

## BONNET TYPE FREEZERS WITH CURVED GLASS / WITH SOLID LIDS



FOR MODELS  
S, D, W



Branding



Electronic controller



Auto-defrost



LED lighting



Body cabinet painting



Modular shelving



Protective bumpers



FOR MODEL Z



Branding



Body cabinet painting



Additional baskets



Stainless steel lid

FRAME COLOUR  
for models S, D, W:



### S, D, W, Z SERIES

	M800S			M800D			M800W			M800Z					
Width × Depth × Height (mm)	1906×806×970			1906×806×970			1906×806×970			1906×890×905					
Gross volume (dm <sup>3</sup> )	822			815			822			786					
Net volume (dm <sup>3</sup> )	629			629			629			698					
Ambient temperature range (°C)										+16 ÷ +30					
Operating temperature range (°C)										-14 ÷ -23					
Climate class										4					
Temperature range										electronic controller			electromechanical		
Refrigerant type	R452a	R404a	R290	R452a	R404a	R290	R452a	R404a	R290	R452a	R404a	R290			
Current consumption (A)	3,0	2,6		3,0	2,6		3,0	2,6		2,7		2,4			
Electric power consumption (kW/24h)	4,8	4,1		4,8	4,1		4,8	4,1		3,5		3			
Baskets (pcs)	6			6			6			1					
Lock										+					
Castors/legs (pcs)	5			5			5			6					
Weight (kg)	115			115			115			105					

CHARACTERISTICS





# UNIVERSAL BONNET WITH CURVED GLASS



FRAME COLOUR:



**TWO COMPARTMENTS WITH  
DIFFERENT TEMPERATURE RANGES**



Branding



Body cabinet  
painting



Modular  
shelving



Price tag holder



## ADVANTAGES

- Bonnet freezers of the latest generation are helpful for retail with small sales areas. They help with fresh, chilled and frozen foods to be stored and displayed in one refrigeration unit.
- Two separate compartments operate on independent cooling circuits with two compressors. Available settings are possible at the following temperature ranges:
  - 14...-23/-14...-23;
  - 5...+5/-5...+5;
  - 5...+5/-14...-23.
- The temperature range is fixed and preset by the manufacturer.
- Low investment and maintenance costs, temperature display on a front panel and refrigerant with low environmental impact.
- Installation of a shelving system and price tag holder help in optimizing the sales area and make purchase process comfortable and enjoyable.

## 1000 S

CHARACTERISTICS

Width × Depth × Height (mm)	2001×1001×1014					
Gross volume (dm <sup>3</sup> )	1062					
Net volume (dm <sup>3</sup> )	764					
Ambient temperature range (°C)	+16 ÷ +35					
Compartments mode	Two compartments		Two compartments		Compartment one	Compartment two
Operating temperature range (°C)	-14 ÷ -23		-5 ÷ +5		-14 ÷ -23*	-5 ÷ +5*
Climate class	7					
Temperature range	electronic controller					
Refrigerant type	R452a	R404a	R290	R290*	R290*	R290
Current consumption (A)	3,5		3,2	1,7	1,5	2,4
Electric power consumption (kW/24h)	71		6,7	5,7	3,5	5,3
Baskets (pcs)	6					
Lock	-					
Castors (pcs)	4					
Weight (kg)	140					

\* – energy efficient model

## BONNET TYPE FREEZERS WITH CURVED GLASS / WITH SOLID LIDS



FOR MODEL Z



Branding



Body cabinet painting



Additional baskets



FOR MODEL V



Branding



Body cabinet painting



Modular shelving

FRAME COLOUR  
for model V:



### 1000 V/Z

### M1000V

### M1000Z

	M1000V			M1000Z		
Width × Depth × Height (mm)	2001×1001×982			2001×1080×905		
Gross volume (dm <sup>3</sup> )	1104			1121		
Net volume (dm <sup>3</sup> )	774			923		
Ambient temperature range (°C)	+16 ÷ +30			+16 ÷ +30		
Operating temperature range (°C)	-14 ÷ -23			-14 ÷ -23		
Climate class	4			4		
Temperature range	electromechanical			electromechanical		
Refrigerant type	R452a	R404a	R290	R452a	R404a	R290
Current consumption (A)	3,4		3,0	3,2		2,9
Electric power consumption (kW/24h)	6,5		6,0	4,5		4,2
Baskets (pcs)	6			2		
Lock	-			+		
Castors/legs (pcs)	4			6		
Weight (kg)	145			140		

CHARACTERISTICS

## ISLAND LINE



Island line is a modern method of equipping the store unit with components for space-saving, presentation and sales of different food products stored in freezers, as well as related products placed on the top shelves.

This model range allows to create island lines of any size and configuration, with or without frontal modules, combined of medium and low temperature lines for sales of wide product ranges. One of the most successful solutions are the display freezers M800 of D, S, W-series. They have large inner capacity which perfectly fit out any store. The most common way is to use M800S as the main part and M800W as the frontal module of island line.

This innovative refrigeration equipment with perfect shapes and large display area is fitted with automatic defrosting system and an electronic controller.

**Freezepoint**

**JUKA**

**DISPLAY COUNTERS  
WITH CURVED GLASS**





## FEATURES

- Built-in cooling unit.
- Curved tempered front glass.
- Impact-resistant ABS plastic sidewalls.
- Compartment for storekeeping.
- Carel electronic controller with auto-defrost function.
- Organic glass sliding curtains.
- Front tempered glass with gas lifts.
- Fixed socket outlet (220V).
- Stainless steel exposition interior and back shelf.
- Energy-saving LED lighting.
- Cabinet body made of powder coated galvanized 0,65 mm steel with polyurethane foam filling.
- Optional: black silk screen printing.
- Adjustable legs.
- Cabinet body painting according to RAL



Front tempered glass with gas lifts.



Bag holder



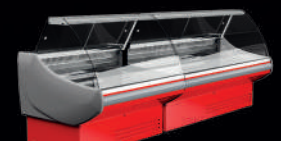
Knife stand



Cutting board / scales stand



T8 FOOD Fresh Meat LED lighting



Assembling in line  
Remote refrigeration unit



Stepped layout,  
glass divider

### SGL/VGL SERIES

	SGL130			SGL160			SGL190			SGL260			VGL130			VGL160			VGL190		
Width with side panels × Depth × Height (mm)	1300×1120×1250			1600×1120×1250			1900×1120×1250			2600×1120×1250			1300×1120×1250			1600×1120×1250			1900×1120×1250		
Layout width (mm)	745																				
Display area (m <sup>2</sup> )	0,88			1,11			1,33			1,83			0,88			1,11			1,33		
Volume of storage box (L)	200			250			300			425			200			250			300		
Type of air movement	gravitational																				
Type of defrosting	automatic																				
Ambient temperature range (°C)	+16 ÷ +25																				
Operating temperature range (°C)	-2 ÷ +8									+2 ÷ +8											
Climate class	3																				
Refrigerant type	R452a	R404a	R290	R452a	R404a	R290	R452a	R404a	R290	R452a	R404a	R290	R452a	R404a	R290	R452a	R404a	R290	R452a	R404a	R290
Current consumption (A)	2,7	1,3	2,7	1,3	3,1	1,8	3,4	2,7	1,1	2,7	1,3	3,1	1,8	2,7	1,3	3,1	1,8	2,7	1,3	3,1	1,8
Electric power consumption [kW/24h]	4,2	4,1	5,8	4,5	6,6	5,3	10	4,2	3,3	5,8	3,6	6,6	4,4	4,2	3,3	5,8	3,6	6,6	4,4	4,2	3,3
Weight (kg)	125			150			167			239			125			150			167		

CHARACTERISTICS



**DISPLAY COUNTERS  
WITH FLAT GLASS**





Front tempered glass with gas lifts.



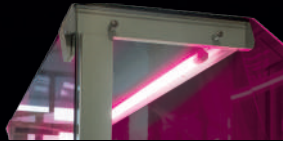
Bag holder



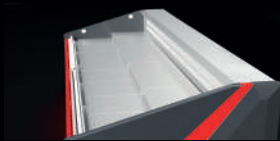
Knife stand



Cutting board / scales stand



T8 FOOD Fresh Meat LED lighting



Stepped layout,  
glass divider



Assembling in line  
Remote refrigeration unit

## FEATURES

- Built-in cooling unit.
- Curved tempered front glass.
- Impact-resistant ABS plastic sidewalls.
- Cooling compartment for storekeeping.
- Carel electronic controller with auto-defrost function.
- Organic glass sliding curtains.
- Fixed socket outlet (220V).
- Stainless steel exposition interior and back shelf.
- Energy-saving LED lighting.
- Cabinet body made of powder coated galvanized 0,65 mm steel with polyurethane foam filling.
- Adjustable legs.
- Cabinet body painting according to RAL

## FGL SERIES

Width with side panels × Depth × Height (mm)

**FGL130**  
1300×1110×1250

**FGL160**  
1600×1110×1250

**FGL190**  
1900×1110×1250

**FGL260**  
2600×1110×1250

Layout width (mm)

730

Display area (m<sup>2</sup>)

0,88

1,10

1,32

1,63

Volume of storage box (L)

200

250

300

425

Type of air movement

gravitational

Type of defrosting

automatic

Ambient temperature range (°C)

+16 ÷ +25

Operating temperature range (°C)

-2 ÷ +8

Climate class

3

Refrigerant type

R452a

R404a

R290

R452a

R404a

R290

R452a

R404a

R290

R452a

R404a

Current consumption (A)

2,7

1,3

2,7

1,3

3,1

1,8

Electric power consumption (kW/24h)

4,2

4,1

5,8

4,5

6,6

5,3

Weight (kg)

140

165

183

254

CHARACTERISTICS



**DISPLAY COUNTERS  
WITH FLAT GLASS**





## FEATURES

- Built-in cooling unit.
- Curved tempered front glass.
- Impact-resistant ABS plastic sidewalls.
- Cooling compartment for storekeeping.
- Carel electronic controller with auto-defrost function.
- Glass unit sliding doors.
- Fixed socket outlet (220V).
- Stainless steel exposition interior and back shelf.
- Energy-saving LED lighting.
- Cabinet body made of powder coated galvanized 0,65 mm steel with polyurethane foam filling.
- Adjustable legs.
- Cabinet body painting according to RAL



Bag holder



Knife stand



Cutting board / scales stand



T8 FOOD Fresh Meat LED lighting



Stepped layout,  
glass divider



Corner refrigerated display FDI E  
assembling in line

### FDI SERIES

	FDI160		FDI197		FDI260		FDI E Corner refrigerated display	
Width with side panels × Depth × Height (mm)	1600×1195×1255		1975×1195×1255		2600×1195×1255		2220×1240×1255	
Layout width (mm)			900					
Display area (m <sup>2</sup> )	1,35		1,69		2,25		1,26	
Volume of storage box (L)	170		210		280			
Type of air movement					dynamic			
Type of defrosting					automatic			
Ambient temperature range (°C)					+16 ÷ +25			
Operating temperature range (°C)					0 ÷ +8			
Climate class					3			
Refrigerant type	R462a	R404a	R462a	R404a	R462a	R404a	R462a	R404a
Current consumption (A)	2,3		2,8		3,7		2,0	
Electric power consumption [kW/24h]	8,2		9,9		12,2		7,8	
Weight (kg)	197		234		299		206	

CHARACTERISTICS



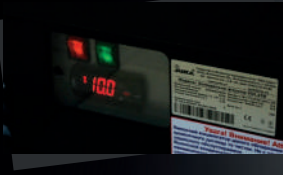
**PASTRY COUNTERS  
WITH CURVED / FLAT GLASS**

VDL 108A



VDL 158





Sliding doors with silicone sealing profile



Minimization of product weathering



Optional: individual decorative finishing made of wide variety of materials

## FEATURES

- Built-in cooling unit.
- Dynamic cooling mode.
- Carel electronic controller with auto-defrost function.
- The evaporator with extended work surface minimizes weathering of the products.
- A wide exposition surface is secured by four glass shelves.
- Height adjustable legs.
- Stainless steel framework.
- Front glass opening for easy and fast cleaning.

## VDL SERIES

### VDL108

990×800×1380

### VDL158

1490×800×1380

### VDL108 A

990×800×1390

### VDL158 A

1490×800×1390

CHARACTERISTICS

	VDL108			VDL158			VDL108 A			VDL158 A		
Width × Depth × Height without decorative panels (mm)	990×800×1380			1490×800×1380			990×800×1390			1490×800×1390		
Layout width (mm)	350/450/470						450/470					
Display area (m <sup>2</sup> )	1,62			2,41			1,69			2,56		
Refrigeration volume (dm <sup>3</sup> )	582			867			678			1025		
Max. relative humidity (%)				60								
Type of air movement				dynamic								
Type of defrosting				automatic								
Ambient temperature range (°C)				+16 ÷ +25								
Operating temperature range (°C)	+6 ÷ +12									+4 ÷ +10		
Climate class				3								
Refrigerant type	R452a	R404a	R290	R452a	R404a	R290	R452a	R404a	R290	R452a	R404a	R290
Current consumption (A)	3,0	3,6	3,6	3,6	3,7	3,0	3,0	3,6	3,6	3,6	3,6	3,7
Electric power consumption (kW/24h)	9,2	6,2	11,3	9,5	9,5	9,5	6,6	11,5	11,5	11,5	9,8	
Weight (kg)	166			223			177			240		

## COOLING AND FREEZING CABINETS WITH GLASS DOORS

FOR MODELS  
VD75G, ND75G



Branding



Price tag holder



Decorative  
back wall



LED lighting



Holder for  
hanging  
products



Additional  
grid shelf

FOR MODEL  
VD75GA



Branding



Additional  
grid shelf



LED lighting



	VD75G	ND75G	VD75GA
Width × Depth × Height (mm)	750×820×2035		749×810×2100
Gross volume (dm <sup>3</sup> )	590		749
Net volume (dm <sup>3</sup> )	490		700
Ambient temperature range (°C)	+16 ÷ +35		+16 ÷ +30
Operating temperature range (°C)	+1 ÷ +10	-12 ÷ -22	+1 ÷ +10
Climate class	7		4
Temperature range	electronic controller		
Type of air movement	dynamic		
Type of defrosting	automatic		
Refrigerant type	R452a	R404a	R290
Current consumption (A)	2,5	3,6	2,3
Electric power consumption (kW/24h)	6,0	10,0	3,52
Grid shelves	4		5
Lock	-		+
Castors / Legs (pcs)	-/4		4/2
Max load on a grid shelf (kg)	25		57
Weight (kg)	154		152

CHARACTERISTICS

## COOLING AND FREEZING CABINETS WITH GLASS DOORS



Branding



LED lighting



Upright cabinet  
stand



Additional  
grid shelf



FOR MODEL  
NG60G



Price tag  
holder



Lock

ND60G

VD60G

VG60G

NG60G

CHARACTERISTICS

	ND60G	VD60G	VG60G	NG60G		
Width × Depth × Height (mm)		599×591×860		600×567×1016		
Gross volume (dm <sup>3</sup> )		126		115		
Net volume (dm <sup>3</sup> )	99	99	102	105		
Ambient temperature range (°C)		+16 ÷ +25		+16 ÷ +30		
Operating temperature range (°C)	-14 ÷ -22	0 ÷ +8	+2 ÷ +10	-12 ÷ -22		
Climate class		3		4		
Temperature range		electronic controller	electromechanical	electronic controller		
Type of air movement		dynamic	gravitational	gravitational		
Type of defrosting	automatic (fan)	automatic (fan)	manual	manual		
Refrigerant type	R290	R600a	R600a	R404a	R290	R452a
Current consumption (A)	1	0,8	0,7	1,94	1,6	1,94
Electric power consumption (kW/24h)	4,0	2,2	1,6	6,0	4,9	6,0
Grid shelves		2		3		
Lock			-			
Legs (pcs)			4			
Max load on a grid shelf (kg)		16		20		
Weight (kg)			52			

## COOLING AND FREEZING CABINETS WITH SOLID DOORS



Branding



Stainless steel  
body



**VD70M**

**ND70M**

**SD70M**

Width × Depth × Height (mm)	700×890×2075					
Gross volume (dm <sup>3</sup> )	563					
Net volume (dm <sup>3</sup> )	460					
Ambient temperature range (°C)	+16 ÷ +35					
Operating temperature range (°C)	+1 ÷ +10		-12 ÷ -22		-5 ÷ +5	
Climate class	7					
Temperature range	electronic controller					
Type of air movement	dynamic					
Type of defrosting	automatic					
Refrigerant type	R452a	R404a	R452a	R404a	R452a	R404a
Current consumption (A)	2,5		3,3		3,2	
Electric power consumption (kW/24h)	3,0		8,5		6,0	
Grid shelves	5					
Lock	+					
Legs (pcs)	4					
Max load on a grid shelf (kg)	30					
Weight (kg)	121					

CHARACTERISTICS



## COOLING AND FREEZING CABINETS WITH SOLID DOORS



Branding



Stainless steel  
body

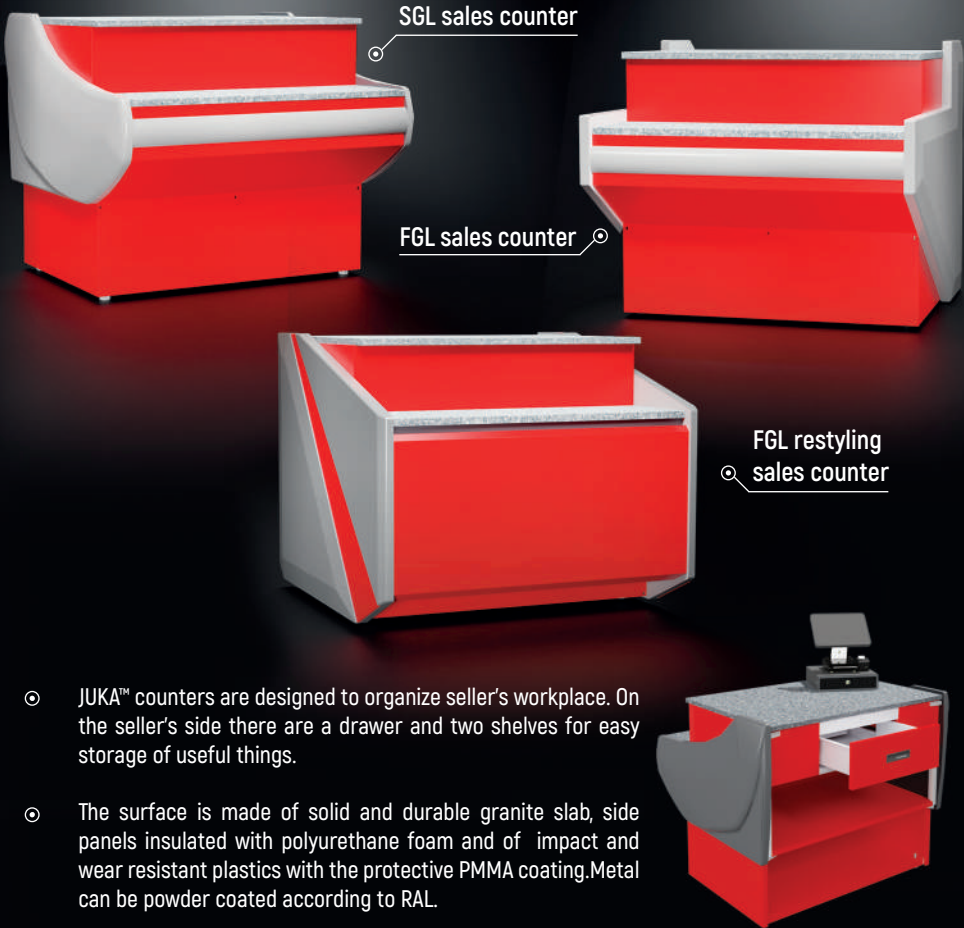
**VD140M**

**ND140M**

Width × Depth × Height (mm)	1412×892×2075			
Gross volume (dm <sup>3</sup> )	1284			
Net volume (dm <sup>3</sup> )	920			
Ambient temperature range (°C)	-16 ÷ +35			
Operating temperature range (°C)	+1 ÷ +10		-12 ÷ -22	
Climate class	7			
Temperature range	electronic controller			
Type of air movement	dynamic			
Type of defrosting	automatic			
Refrigerant type	R452a	R404a	R452a	R404a
Current consumption (A)	4,3			3,4
Electric power consumption (kW/24h)	4,8			13,9
Grid shelves	10			
Middle grid shelves	5			
Lock	+			
Legs (pcs)	4			
Max load on a grid shelf (kg)	30			
Weight (kg)	180			

CHARACTERISTICS

## SALES COUNTERS



- JUKA™ counters are designed to organize seller's workplace. On the seller's side there are a drawer and two shelves for easy storage of useful things.
- The surface is made of solid and durable granite slab, side panels insulated with polyurethane foam and of impact and wear resistant plastics with the protective PMMA coating. Metal can be powder coated according to RAL.

	SGL	FGL	FGL restyling
Length (mm)	1100	1070	1090
Depth (mm)	1100	1100	1100
Height (mm)	900	925	900
Weight (kg)	122	124	123

CHARACTERISTICS

# MODULAR SHELVING



## MULTI-UPRIGHT CABINET STAND

	A	B
Total height (mm)	2065	1915
Stand height (mm)	1072	922
Width (mm)	683	605
Depth (kg)	683	600

## IMMOVABLE MODULAR SHELVING

	M400	M500	M600	M800	M1000
Height (mm)	1640	1640	1665	1665	1640
Width (mm)	1210	1435	1650	1919	2070



## THE MANUFACTURER OF COMMERCIAL COOLING AND FREEZING EQUIPMENT



DISPLAY FREEZERS



CABINETS



DISPLAY COUNTERS



SHOP EQUIPMENT



24/26A Piekna St., 00-549 Warsaw,  
Poland



12b Zvyagelska St., 12402  
Oliyvka village, Zhytomyr district,  
Ukraine



[www.freezepoint.pl](http://www.freezepoint.pl)



[freezepoint-sp-z-o-o](https://www.linkedin.com/company/freezepoint-sp-z-o-o)



[tmfreezepoint](https://www.facebook.com/tmfreezepoint)



[tmfreezepoint](https://www.instagram.com/tmfreezepoint)

### POLAND

supplier, official  
representative in EU

### UKRAINE

production facilities



+48 539 461 738



+380 412 445 755



[sales@freezepoint.pl](mailto:sales@freezepoint.pl)



[juka@juka.ua](mailto:juka@juka.ua)

3D tour  
TRADE INDUSTRY  
2021

